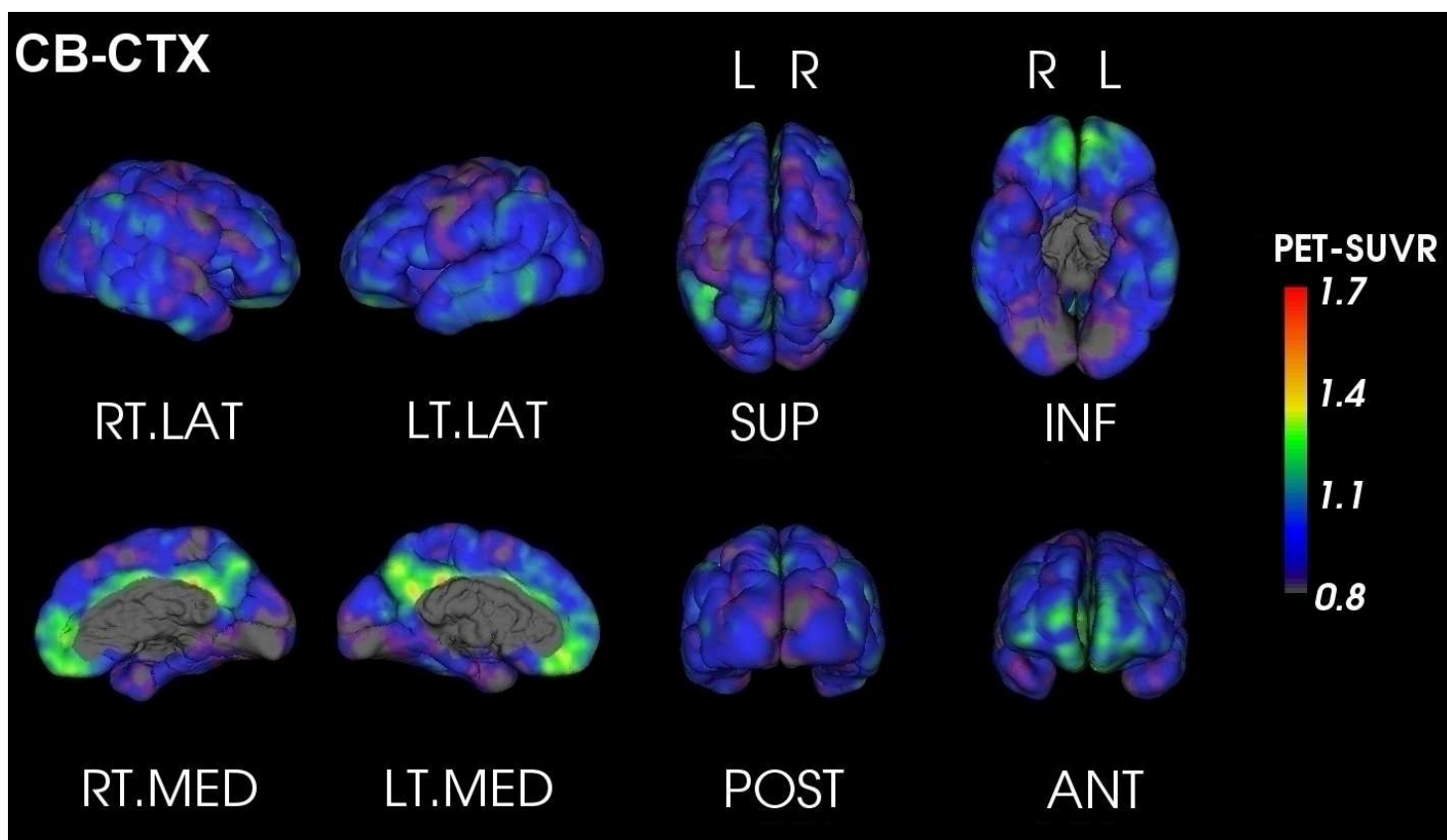




PET Quantification Report

SUBJECT: Anon_AV45.1
TRACER: 18F-AV45
DATE: Friday 11th July, 2014

AMYLOID LOAD: **LOW**
GLOBAL SUVR_{wcb}* : 1.03



SUVR _{wcb}	Orbitofrontal	Frontal	Posterior Cingulate	Parietal	Temporal	Occipital
<i>Left</i>	1.13	1.09	1.27	0.89	1.08	0.84
<i>Right</i>	1.12	1.04	1.11	0.93	0.93	1.09
<i>Asymmetry** (%)</i>	1.19	4.62	14.12	-4.48	14.16	-26.67



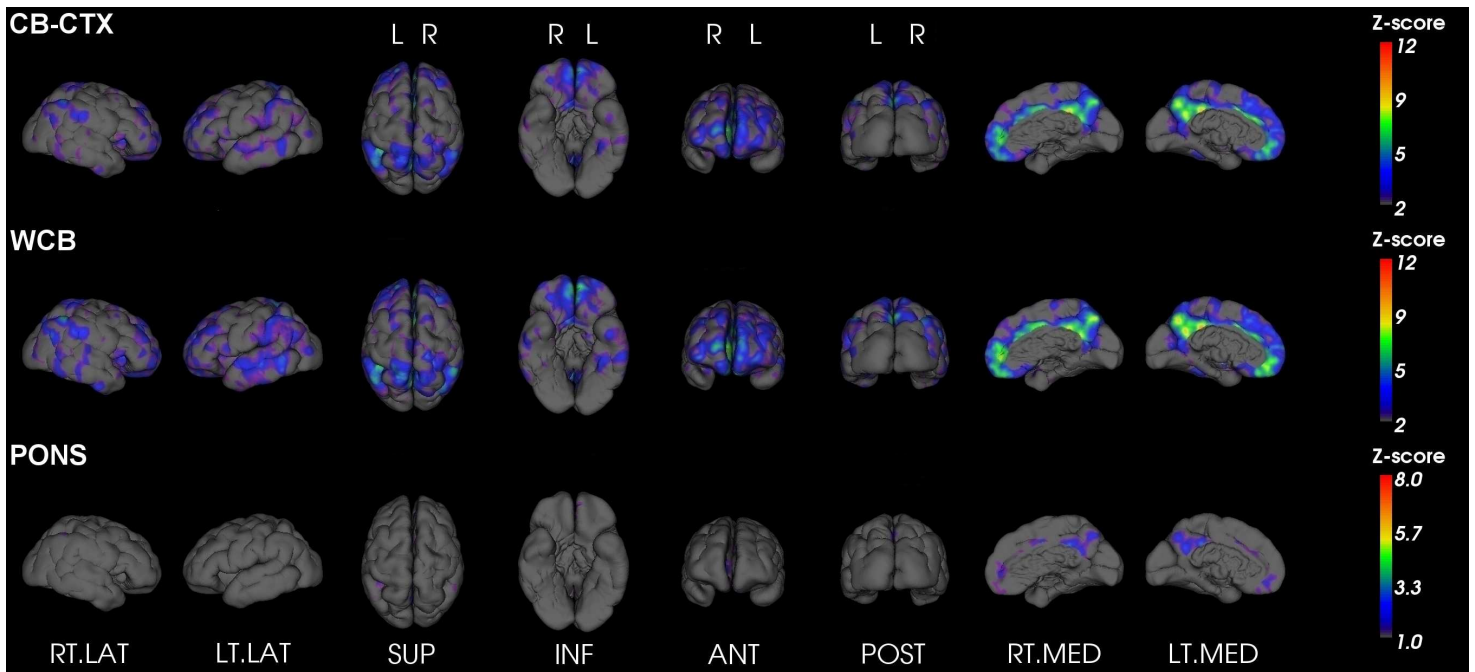
For evaluation purposes only. See <http://capaibl-milxcloud.csiro.au> for conditions of use. Software version 1.0

* Global SUVR is defined as the average of the frontal, superior parietal, lateral temporal and anterior and posterior cingulate regions of the brain

** Asymmetry is defined as the difference between the left and right uptake divided by their average



Z-Score maps



For evaluation purposes only. See <http://capaibl-milxcloud.csiro.au> for conditions of use. Software version 1.0

* Global SUVR is defined as the average of the frontal, superior parietal, lateral temporal and anterior and posterior cingulate regions of the brain

** Asymmetry is defined as the difference between the left and right uptake divided by their average