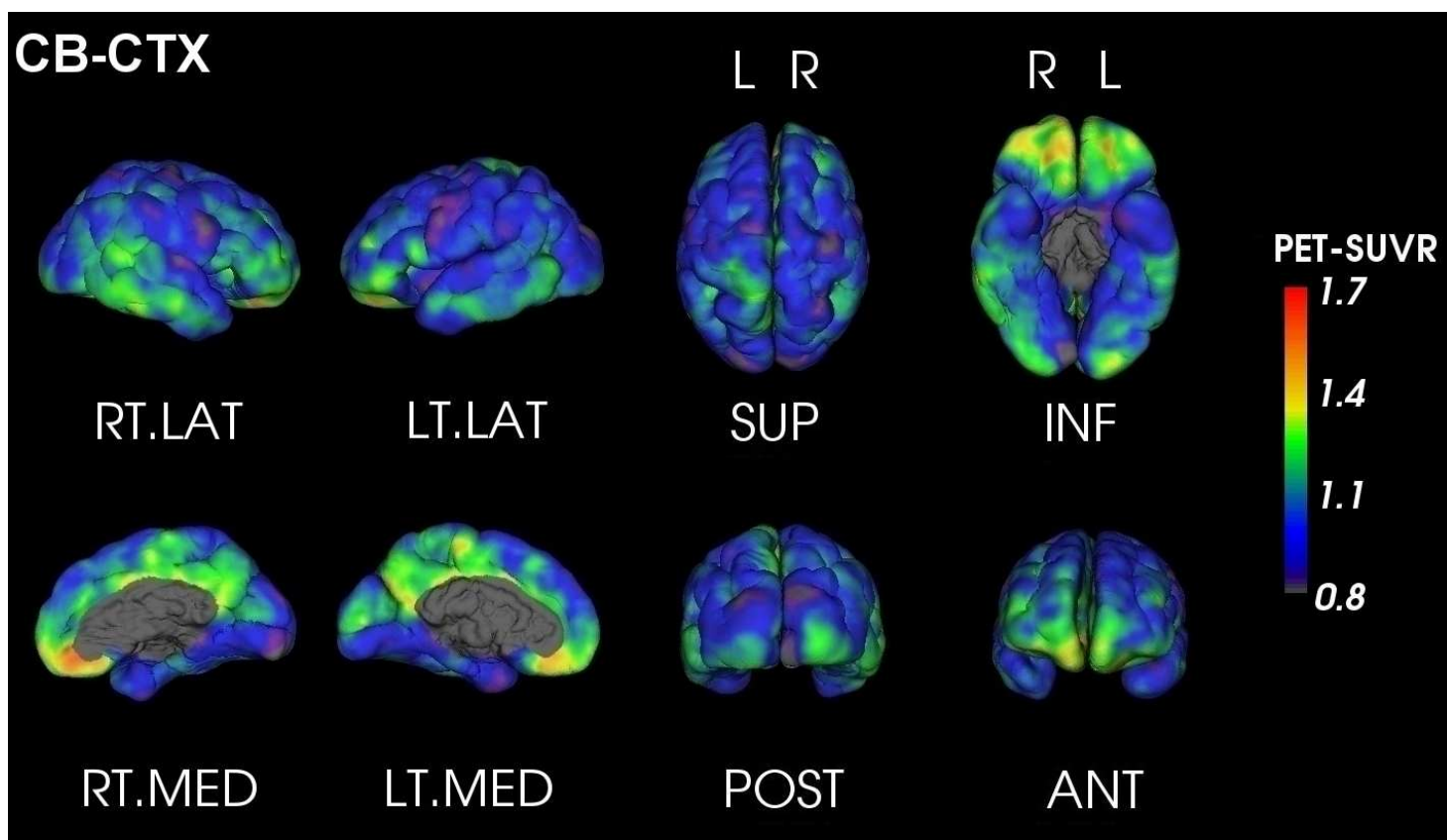




PET Quantification Report

SUBJECT: Anon_AV45_2
TRACER: 18F-AV45
DATE: Friday 11th July, 2014

AMYLOID LOAD: **HIGH**
GLOBAL SUVR_{wcb} * : 1.16



SUVR _{wcb}	Orbitofrontal	Frontal	Posterior Cingulate	Parietal	Temporal	Occipital
<i>Left</i>	1.25	1.08	1.23	1.06	1.07	0.83
<i>Right</i>	1.40	1.23	1.24	1.16	1.08	1.33
<i>Asymmetry ** (%)</i>	-11.07	-13.05	-0.36	-9.14	-0.65	-45.82



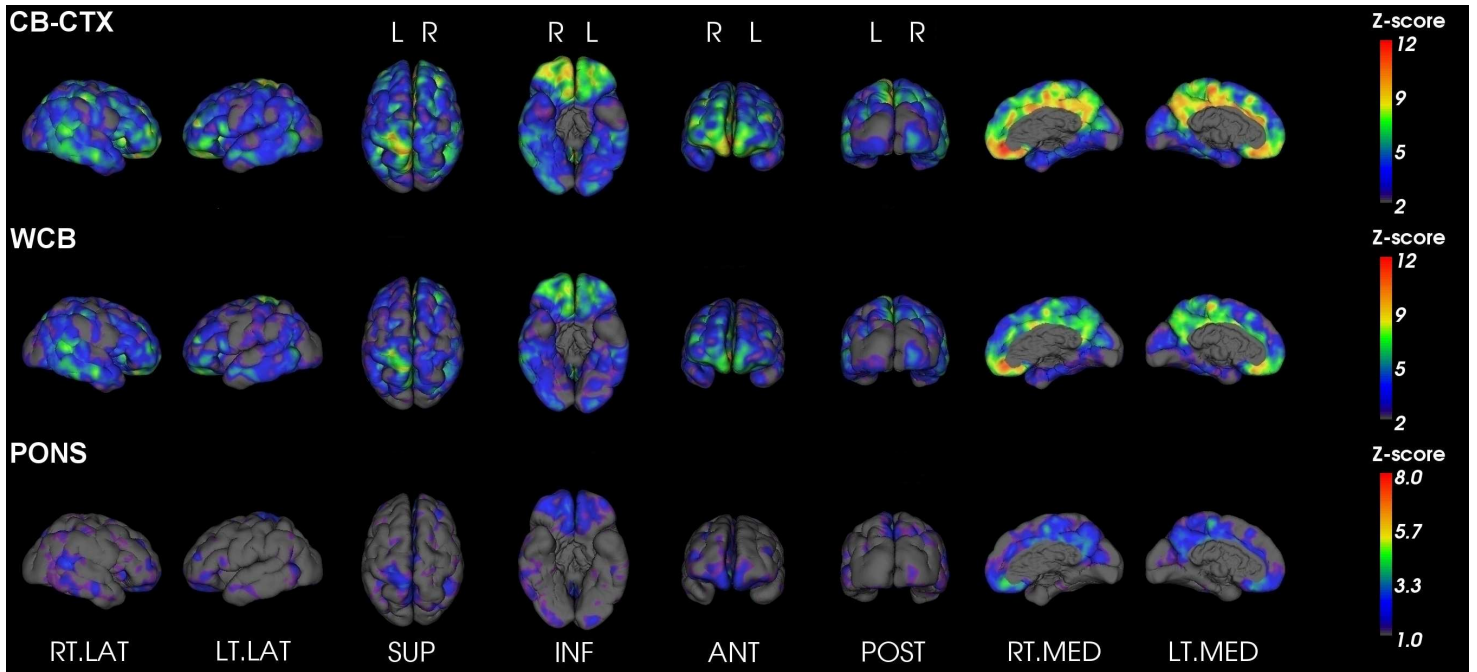
For evaluation purposes only. See <http://capaibl-milxcloud.csiro.au> for conditions of use. Software version 1.0

* Global SUVR is defined as the average of the frontal, superior parietal, lateral temporal and anterior and posterior cingulate regions of the brain

** Asymmetry is defined as the difference between the left and right uptake divided by their average



Z-Score maps



For evaluation purposes only. See <http://capaibl-milxcloud.csiro.au> for conditions of use. Software version 1.0

* Global SUVR is defined as the average of the frontal, superior parietal, lateral temporal and anterior and posterior cingulate regions of the brain

** Asymmetry is defined as the difference between the left and right uptake divided by their average