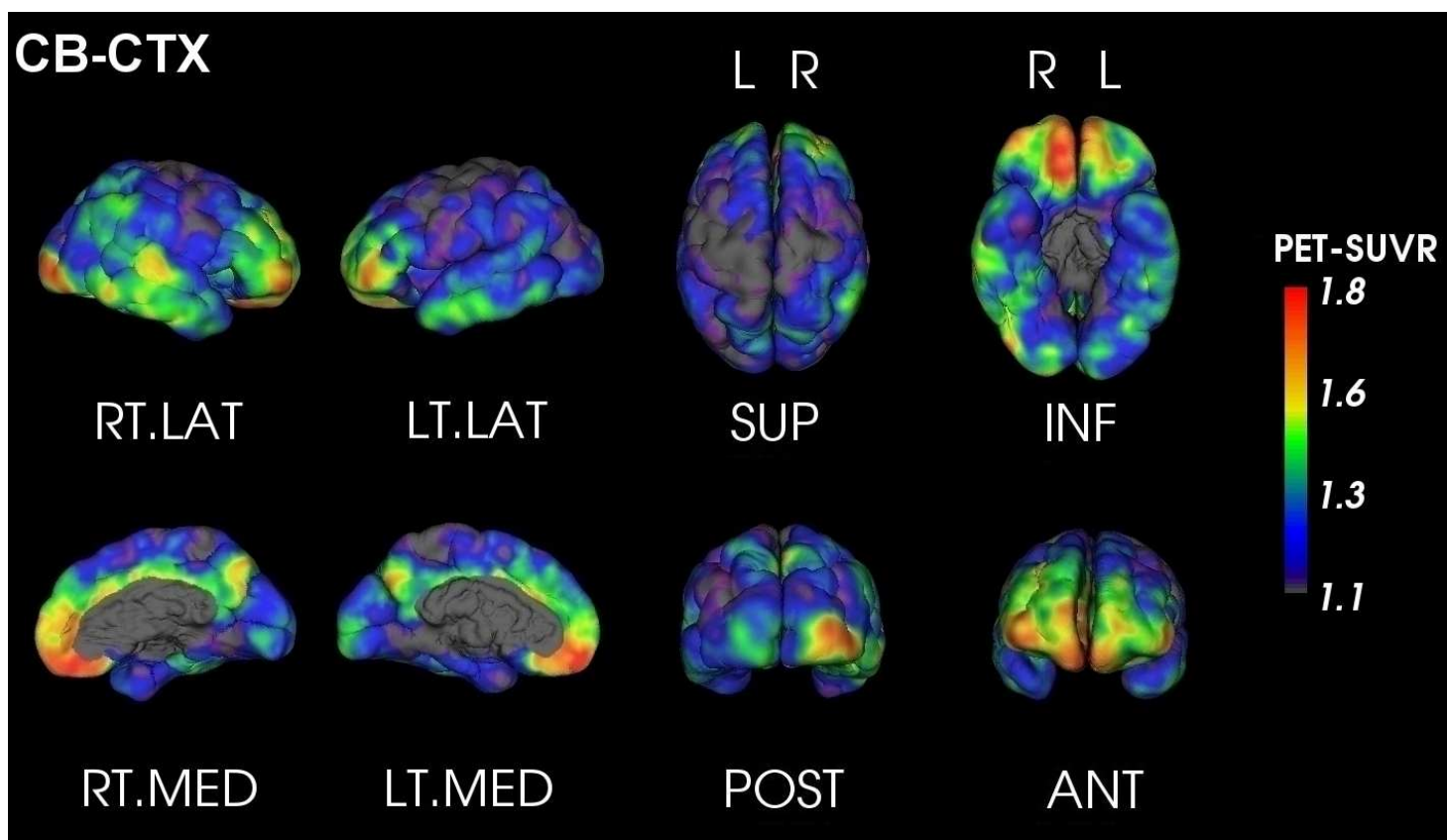




PET Quantification Report

SUBJECT: Anon_FLORBETABEN_1
TRACER: 18F-Florbetaben
DATE: Friday 11th July, 2014

AMYLOID LOAD: **HIGH**
GLOBAL SUVR_{Cb} * : 1.46



SUVR _{Cb}	Orbitofrontal	Frontal	Posterior Cingulate	Parietal	Temporal	Occipital
<i>Left</i>	1.59	1.47	1.46	1.30	1.34	1.31
<i>Right</i>	1.75	1.64	1.42	1.26	1.53	1.73
<i>Asymmetry</i> ** (%)	-9.41	-10.51	2.44	2.49	-13.48	-28.07



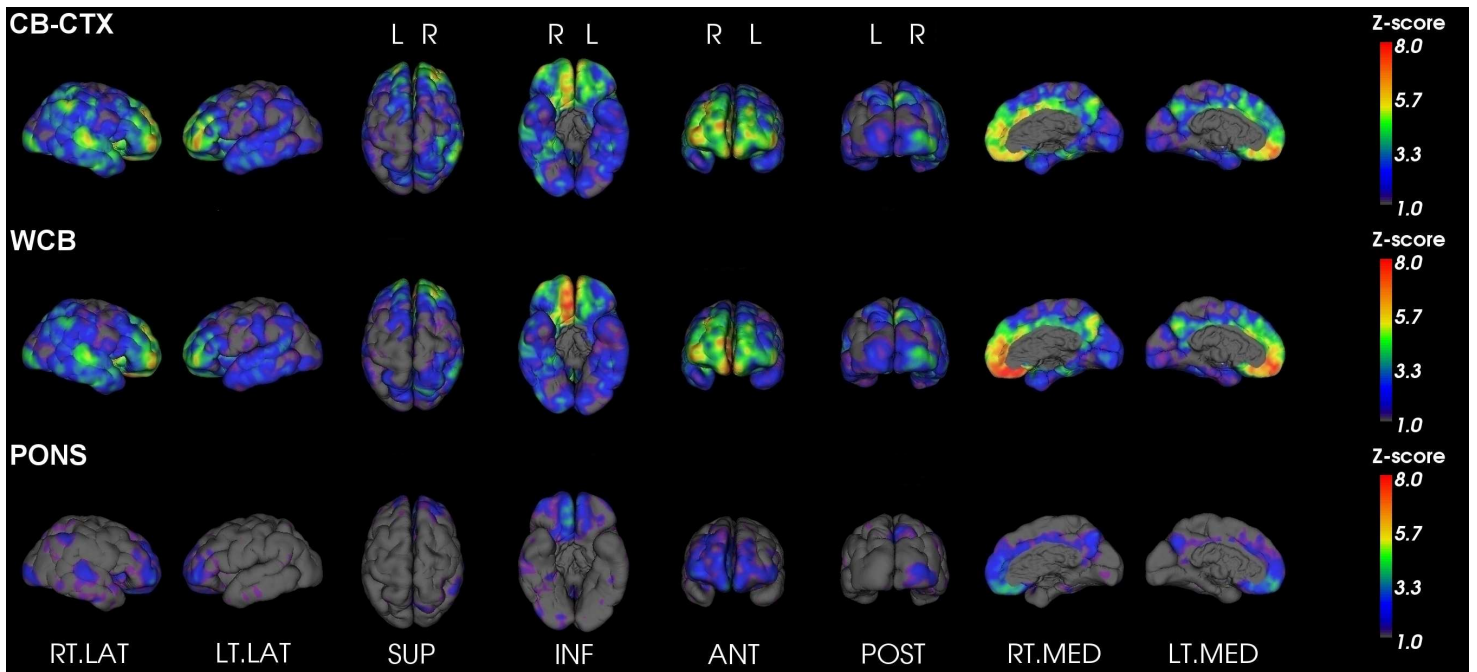
For evaluation purposes only. See <http://capaibl-milxcloud.csiro.au> for conditions of use. Software version 1.0

* Global SUVR is defined as the average of the frontal, superior parietal, lateral temporal and anterior and posterior cingulate regions of the brain

** Asymmetry is defined as the difference between the left and right uptake divided by their average



Z-Score maps



For evaluation purposes only. See <http://capaibl-milxcloud.csiro.au> for conditions of use. Software version 1.0

* Global SUVR is defined as the average of the frontal, superior parietal, lateral temporal and anterior and posterior cingulate regions of the brain

** Asymmetry is defined as the difference between the left and right uptake divided by their average