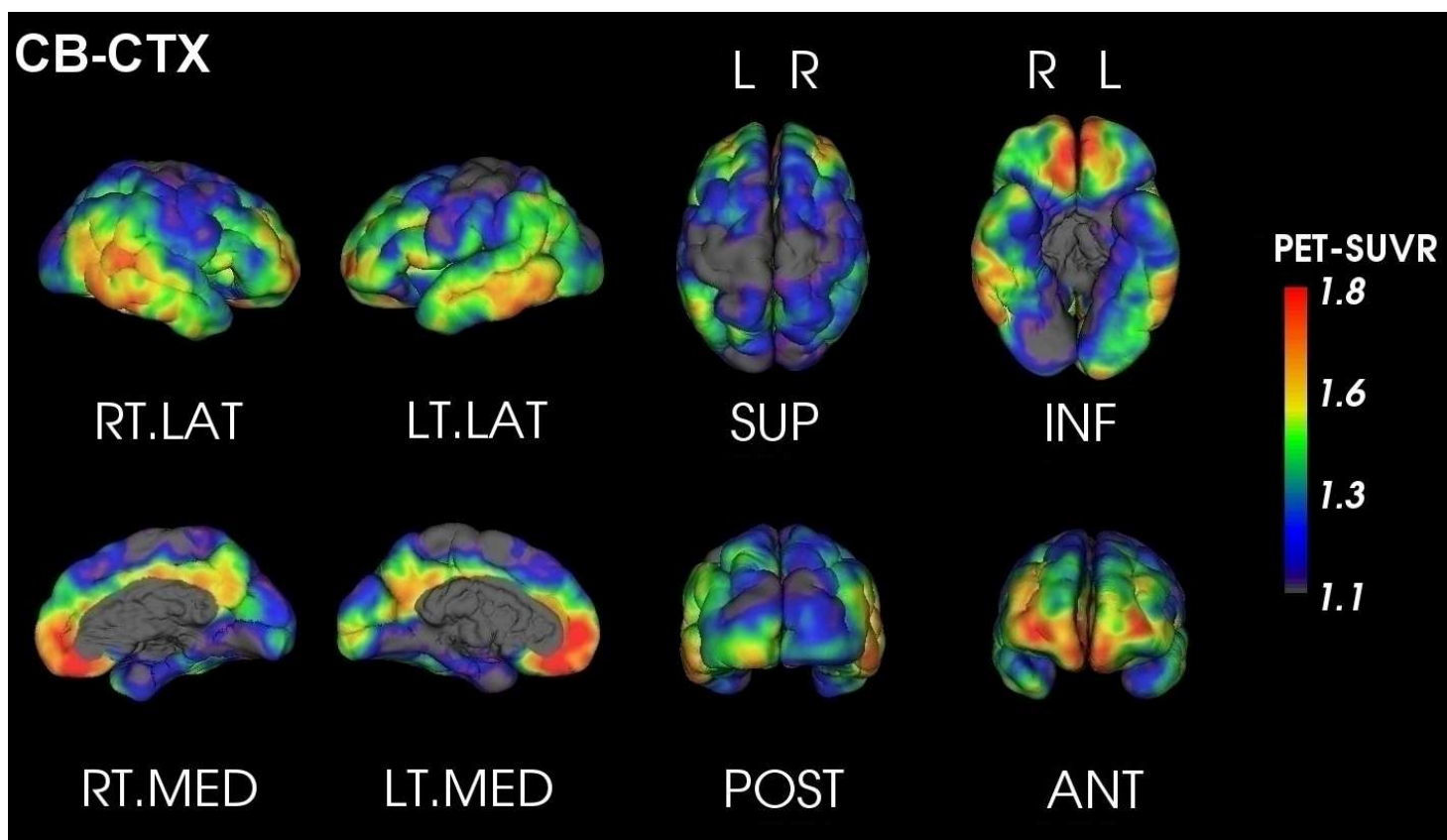




# PET Quantification Report

**SUBJECT:** Anon\_FLORBETABEN\_2  
**TRACER:** 18F-Florbetaben  
**DATE:** Friday 11<sup>th</sup> July, 2014

**AMYLOID LOAD:** **HIGH**  
**GLOBAL SUVR<sub>Cb</sub> \*** : 1.55



SUVR <sub>Cb</sub>	Orbitofrontal	Frontal	Posterior Cingulate	Parietal	Temporal	Occipital
<i>Left</i>	1.59	1.61	1.59	1.51	1.65	1.33
<i>Right</i>	1.73	1.65	1.54	1.49	1.65	1.50
<i>Asymmetry</i> ** (%)	-8.27	-2.63	3.27	1.63	-0.44	-12.48



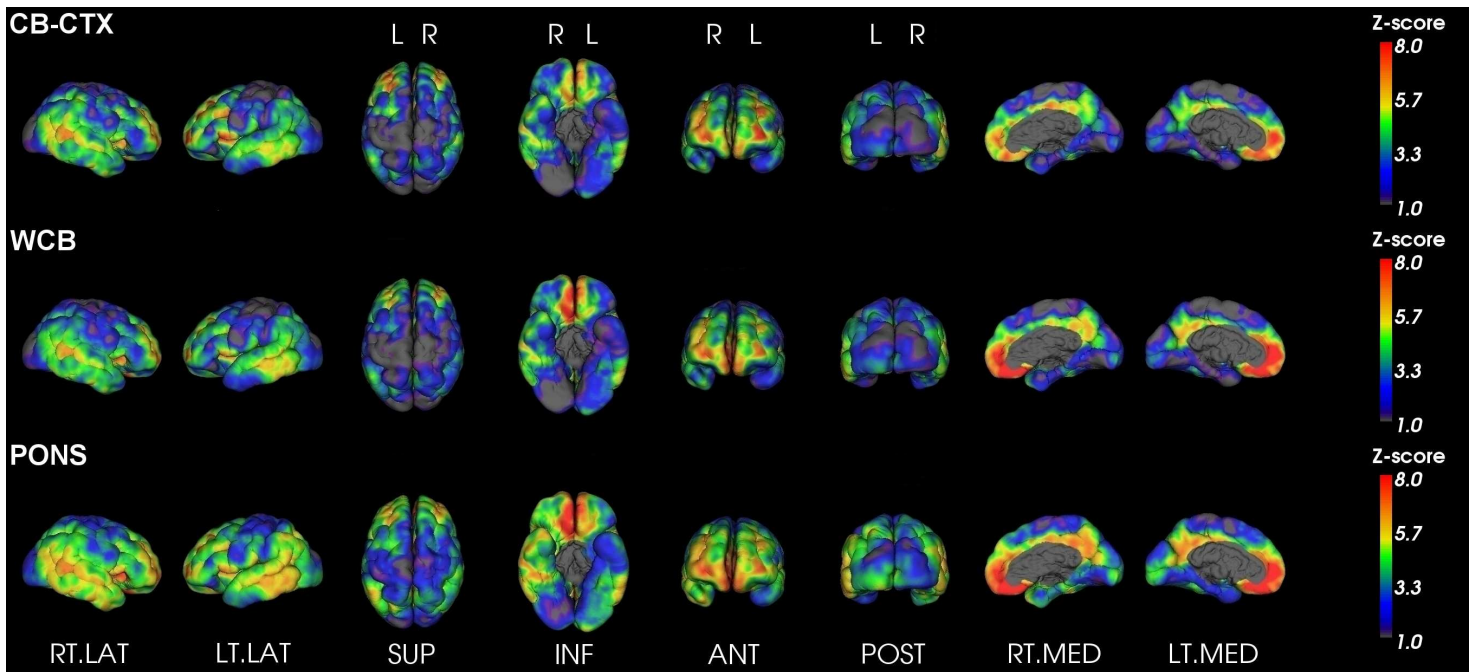
For evaluation purposes only. See <http://capaibl-milxcloud.csiro.au> for conditions of use. Software version 1.0

\* Global SUVR is defined as the average of the frontal, superior parietal, lateral temporal and anterior and posterior cingulate regions of the brain

\*\* Asymmetry is defined as the difference between the left and right uptake divided by their average



## Z-Score maps



For evaluation purposes only. See <http://capaibl-milxcloud.csiro.au> for conditions of use. Software version 1.0

\* Global SUVR is defined as the average of the frontal, superior parietal, lateral temporal and anterior and posterior cingulate regions of the brain

\*\* Asymmetry is defined as the difference between the left and right uptake divided by their average