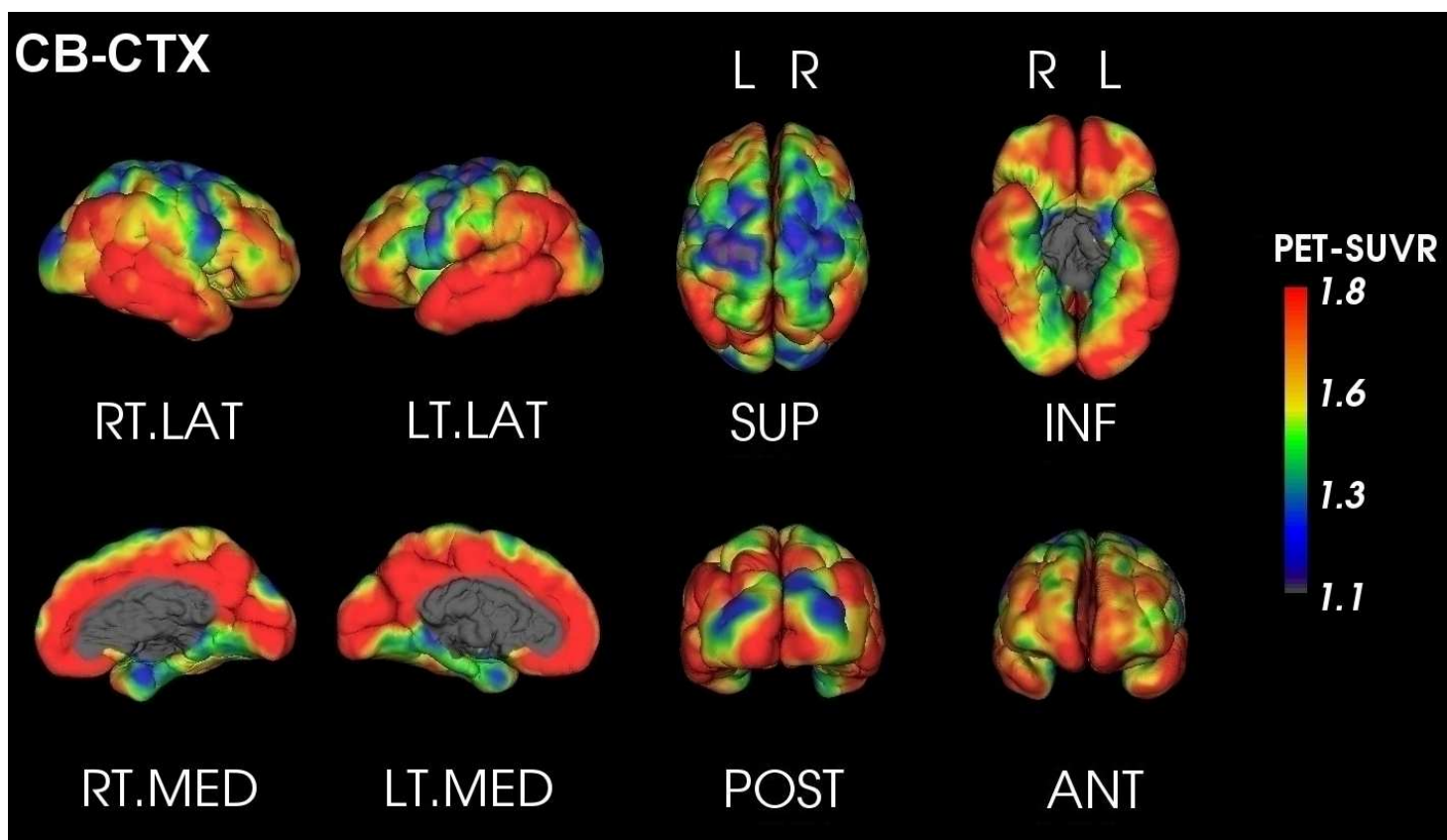




PET Quantification Report

SUBJECT: Anon_FLORBETABEN_3
TRACER: 18F-Florbetaben
DATE: Friday 11th July, 2014

AMYLOID LOAD: **VERY HIGH**
GLOBAL SUVR_{Cb}* : 1.83



SUVR _{Cb}	Orbitofrontal	Frontal	Posterior Cingulate	Parietal	Temporal	Occipital
<i>Left</i>	1.78	1.74	2.27	1.77	1.98	1.43
<i>Right</i>	1.90	1.88	2.18	1.58	1.96	1.69
<i>Asymmetry** (%)</i>	-6.62	-7.87	4.04	11.15	0.90	-16.22



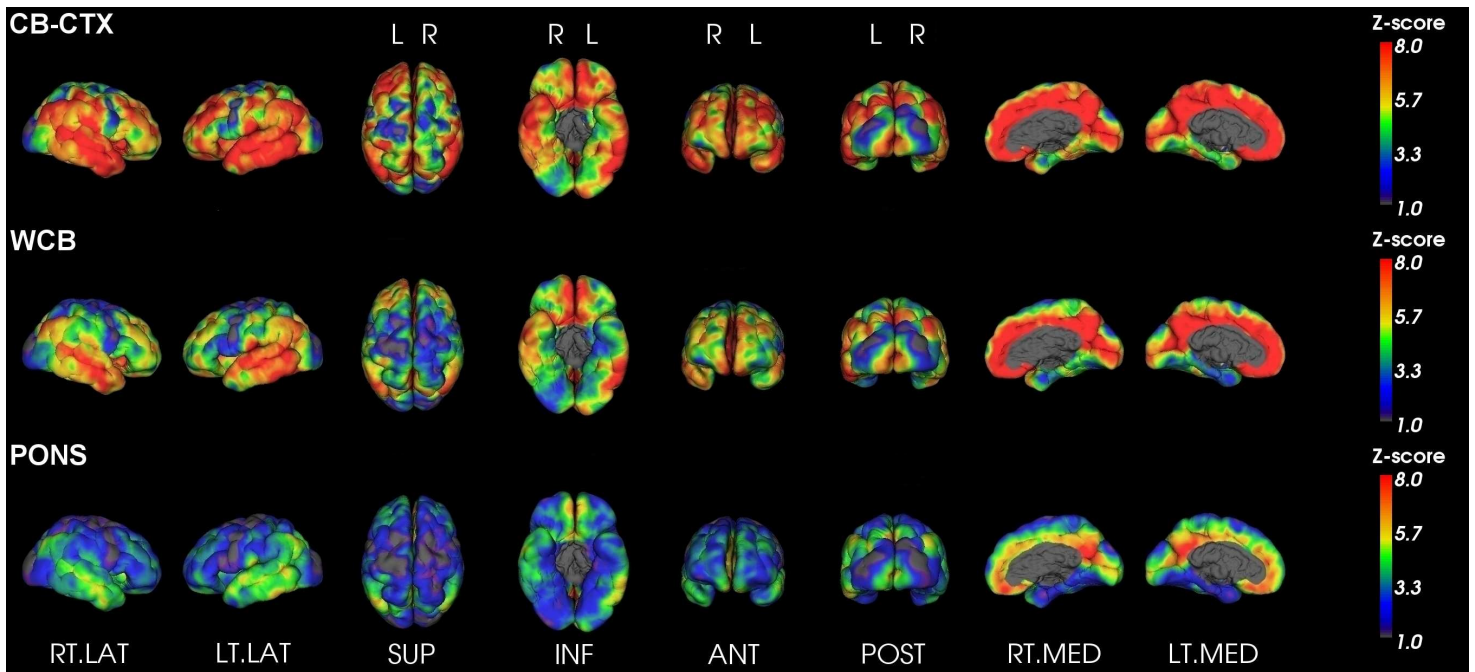
For evaluation purposes only. See <http://capaibl-milxcloud.csiro.au> for conditions of use. Software version 1.0

* Global SUVR is defined as the average of the frontal, superior parietal, lateral temporal and anterior and posterior cingulate regions of the brain

** Asymmetry is defined as the difference between the left and right uptake divided by their average



Z-Score maps



For evaluation purposes only. See <http://capaibl-milxcloud.csiro.au> for conditions of use. Software version 1.0

* Global SUVR is defined as the average of the frontal, superior parietal, lateral temporal and anterior and posterior cingulate regions of the brain

** Asymmetry is defined as the difference between the left and right uptake divided by their average