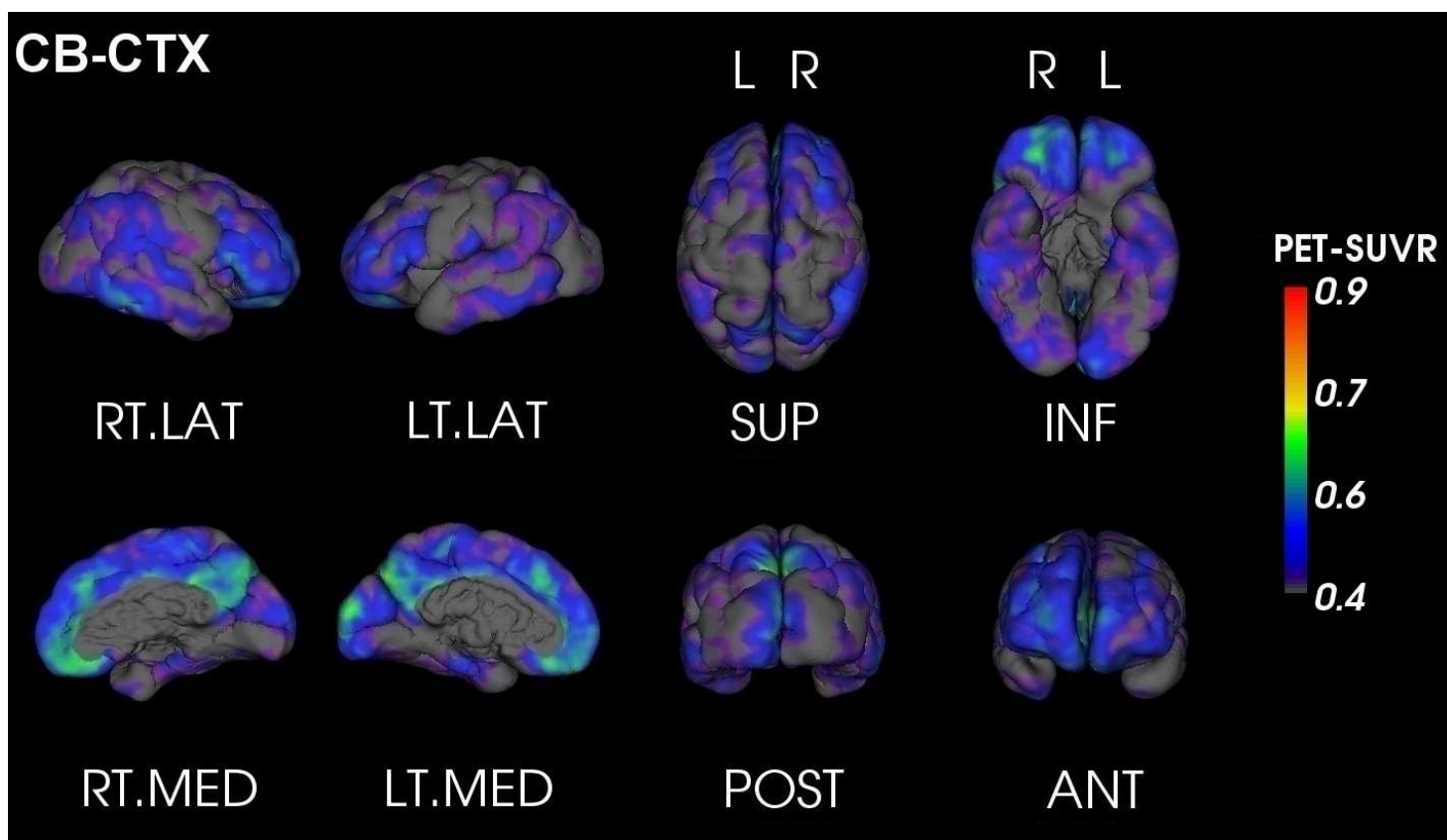




PET Quantification Report

SUBJECT: Anon.FLUTEMETAMOL_2
TRACER: 18F-Flutemetamol
DATE: Friday 11th July, 2014

AMYLOID LOAD: **LOW**
GLOBAL SUVR_{Pons}* : 0.53



SUVR _{Pons}	Orbitofrontal	Frontal	Posterior Cingulate	Parietal	Temporal	Occipital
<i>Left</i>	0.53	0.53	0.62	0.53	0.42	0.39
<i>Right</i>	0.60	0.57	0.56	0.53	0.44	0.57
<i>Asymmetry** (%)</i>	-13.43	-6.69	11.09	-0.85	-5.61	-36.86



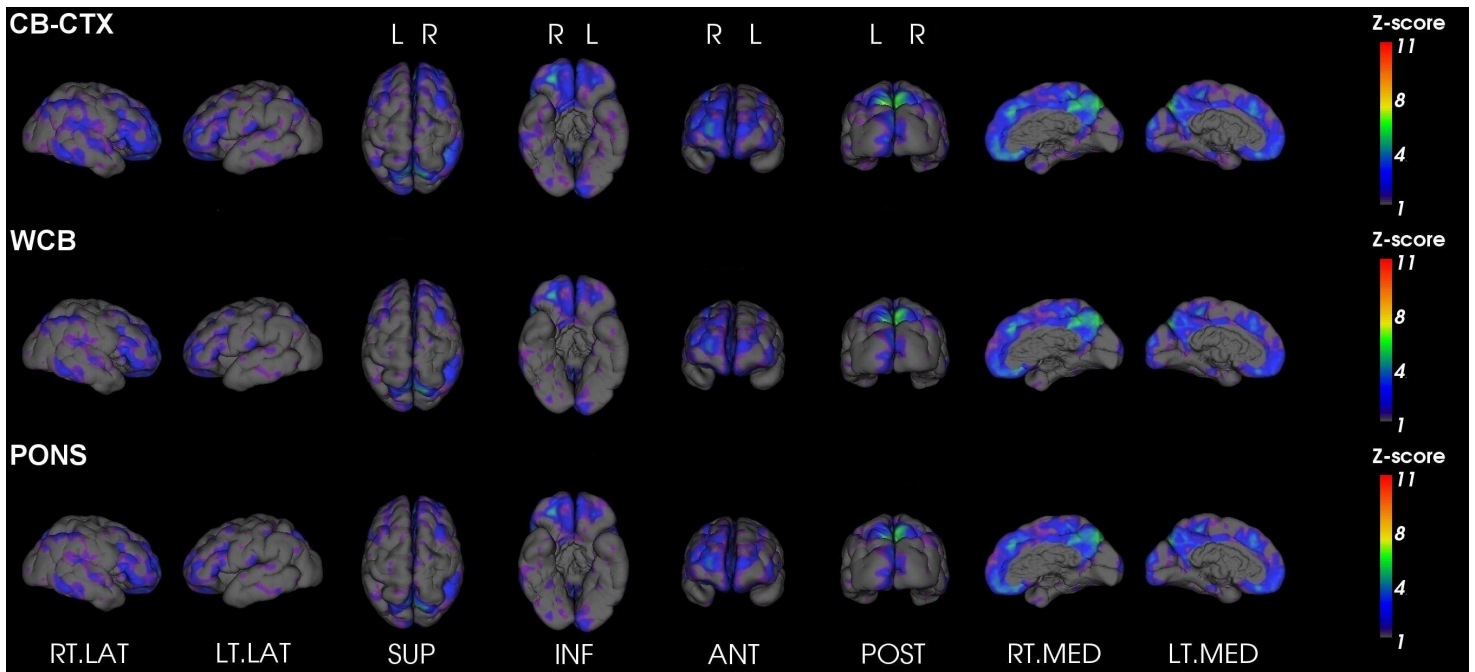
For evaluation purposes only. See <http://capaibl-milxcloud.csiro.au> for conditions of use. Software version 1.0

* Global SUVR is defined as the average of the frontal, superior parietal, lateral temporal and anterior and posterior cingulate regions of the brain

** Asymmetry is defined as the difference between the left and right uptake divided by their average



Z-Score maps



For evaluation purposes only. See <http://capaibl-milxcloud.csiro.au> for conditions of use. Software version 1.0

* Global SUVR is defined as the average of the frontal, superior parietal, lateral temporal and anterior and posterior cingulate regions of the brain

** Asymmetry is defined as the difference between the left and right uptake divided by their average