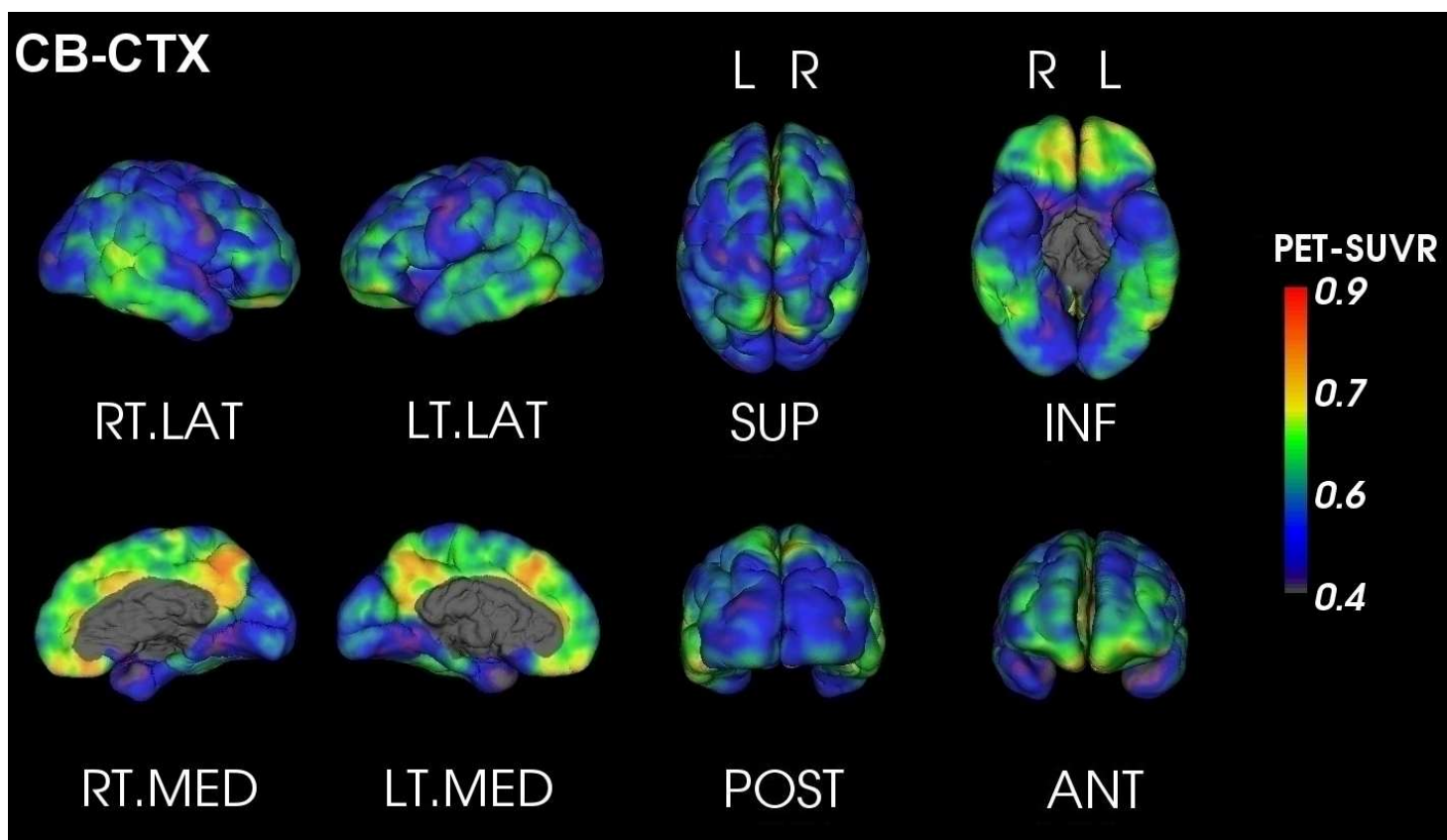




PET Quantification Report

SUBJECT: Anon_FLUTEMETAMOL_3
TRACER: 18F-Flutemetamol
DATE: Friday 11th July, 2014

AMYLOID LOAD: **HIGH**
GLOBAL SUVR_{Pons}* : 0.65



SUVR _{Pons}	Orbitofrontal	Frontal	Posterior Cingulate	Parietal	Temporal	Occipital
<i>Left</i>	0.73	0.65	0.70	0.64	0.63	0.51
<i>Right</i>	0.69	0.66	0.72	0.66	0.55	0.63
<i>Asymmetry** (%)</i>	5.66	-0.78	-2.56	-3.70	12.42	-20.25



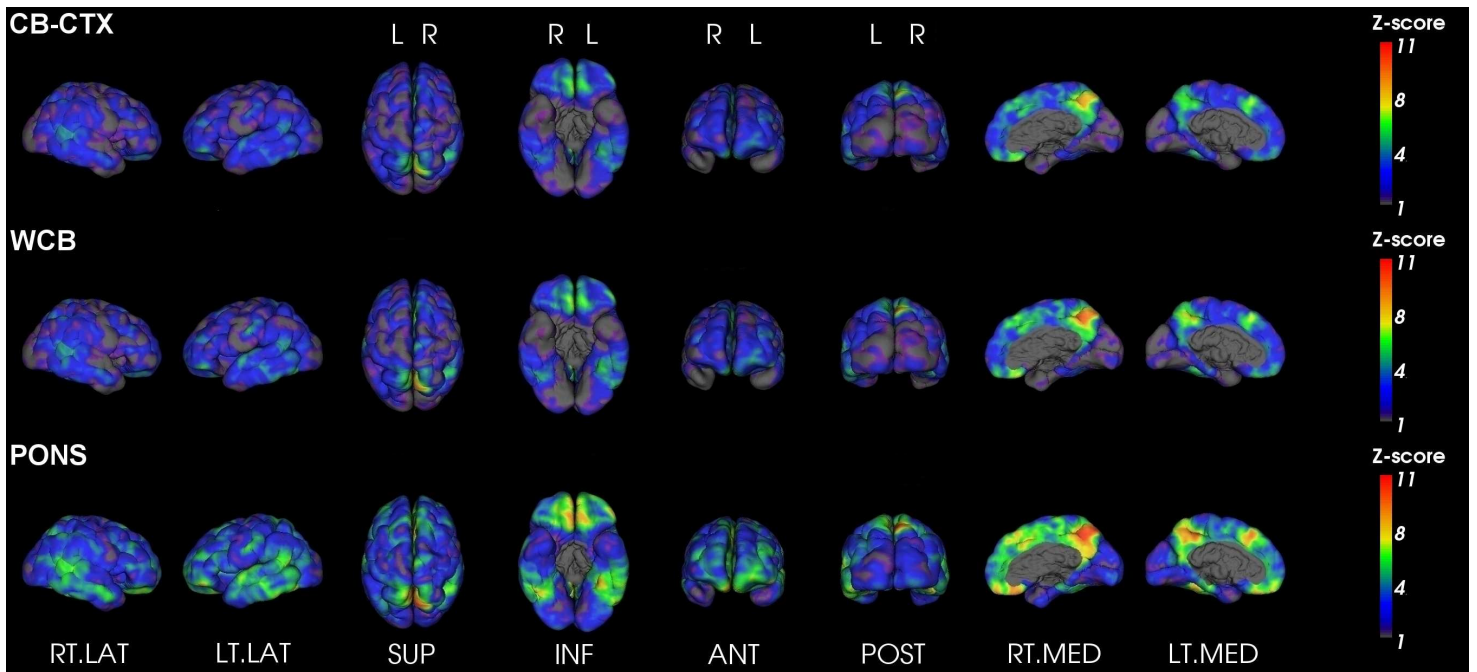
For evaluation purposes only. See <http://capaibl-milxcloud.csiro.au> for conditions of use. Software version 1.0

* Global SUVR is defined as the average of the frontal, superior parietal, lateral temporal and anterior and posterior cingulate regions of the brain

** Asymmetry is defined as the difference between the left and right uptake divided by their average



Z-Score maps



For evaluation purposes only. See <http://capaibl-milxcloud.csiro.au> for conditions of use. Software version 1.0

* Global SUVR is defined as the average of the frontal, superior parietal, lateral temporal and anterior and posterior cingulate regions of the brain

** Asymmetry is defined as the difference between the left and right uptake divided by their average