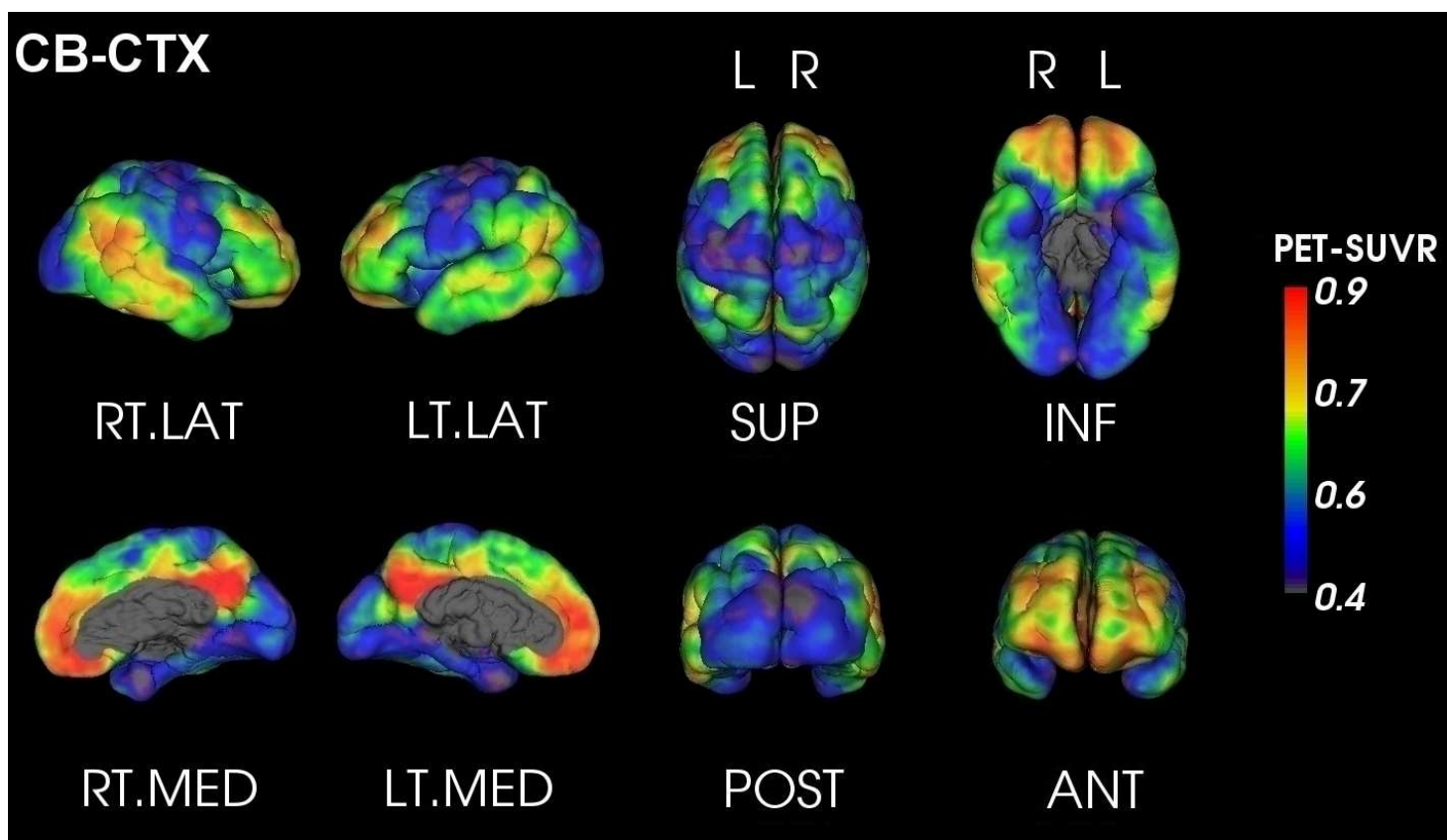




PET Quantification Report

SUBJECT: Anon_FLUTEMETAMOL_4
TRACER: 18F-Flutemetamol
DATE: Friday 11th July, 2014

AMYLOID LOAD: **HIGH**
GLOBAL SUVR_{Pons}* : 0.75



SUVR _{Pons}	Orbitofrontal	Frontal	Posterior Cingulate	Parietal	Temporal	Occipital
<i>Left</i>	0.78	0.82	0.89	0.60	0.73	0.47
<i>Right</i>	0.84	0.83	0.94	0.66	0.81	0.63
<i>Asymmetry** (%)</i>	-7.63	-1.43	-4.42	-10.69	-10.83	-28.81



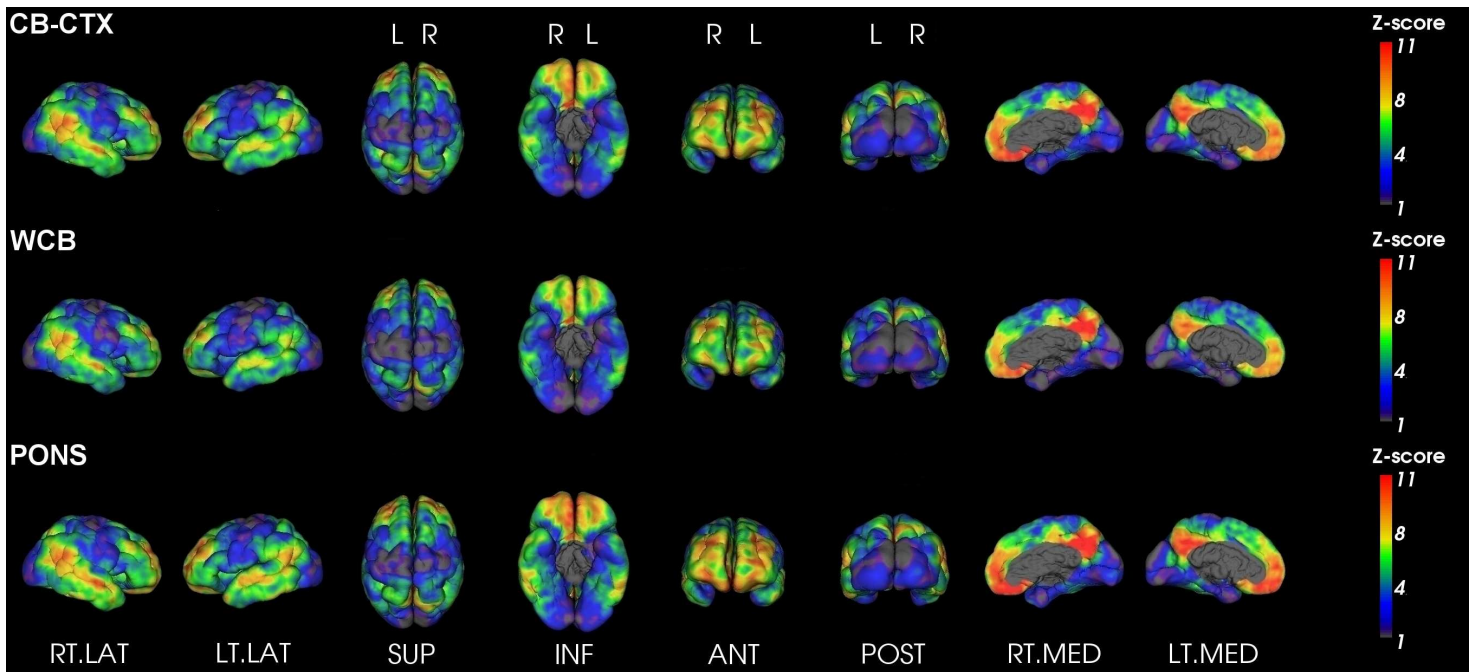
For evaluation purposes only. See <http://capaibl-milxcloud.csiro.au> for conditions of use. Software version 1.0

* Global SUVR is defined as the average of the frontal, superior parietal, lateral temporal and anterior and posterior cingulate regions of the brain

** Asymmetry is defined as the difference between the left and right uptake divided by their average



Z-Score maps



For evaluation purposes only. See <http://capaibl-milxcloud.csiro.au> for conditions of use. Software version 1.0

* Global SUVR is defined as the average of the frontal, superior parietal, lateral temporal and anterior and posterior cingulate regions of the brain

** Asymmetry is defined as the difference between the left and right uptake divided by their average