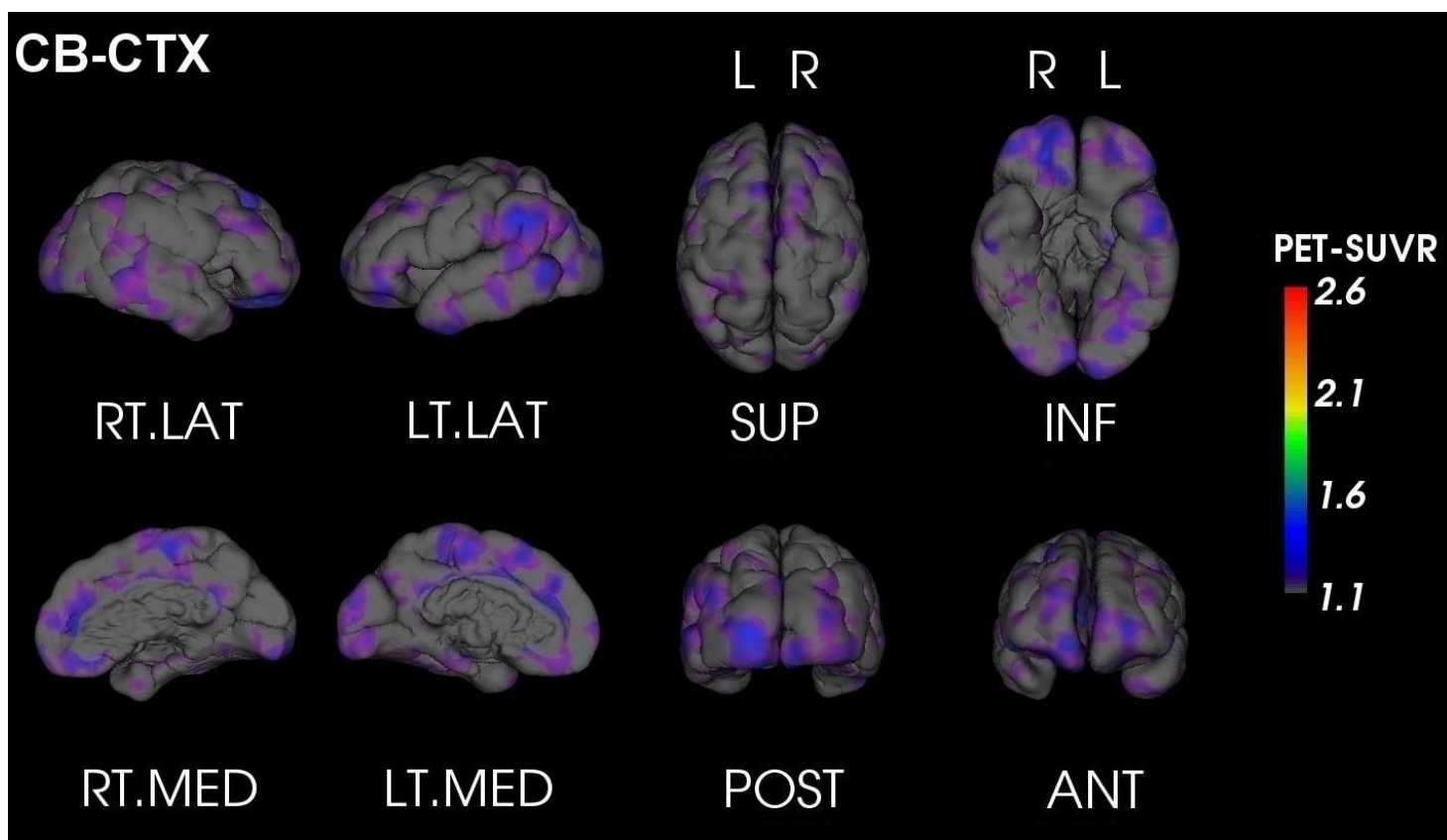




PET Quantification Report

SUBJECT: Anon_PiB_1
TRACER: 11C-PiB
DATE: Friday 11th July, 2014

AMYLOID LOAD: **LOW**
GLOBAL SUVR_{Cb}* : 1.09



SUVR _{Cb}	Orbitofrontal	Frontal	Posterior Cingulate	Parietal	Temporal	Occipital
<i>Left</i>	1.13	0.98	1.08	1.01	1.01	1.08
<i>Right</i>	1.18	1.13	1.06	0.92	0.96	1.33
<i>Asymmetry** (%)</i>	-3.86	-14.25	2.51	8.35	5.56	-20.51



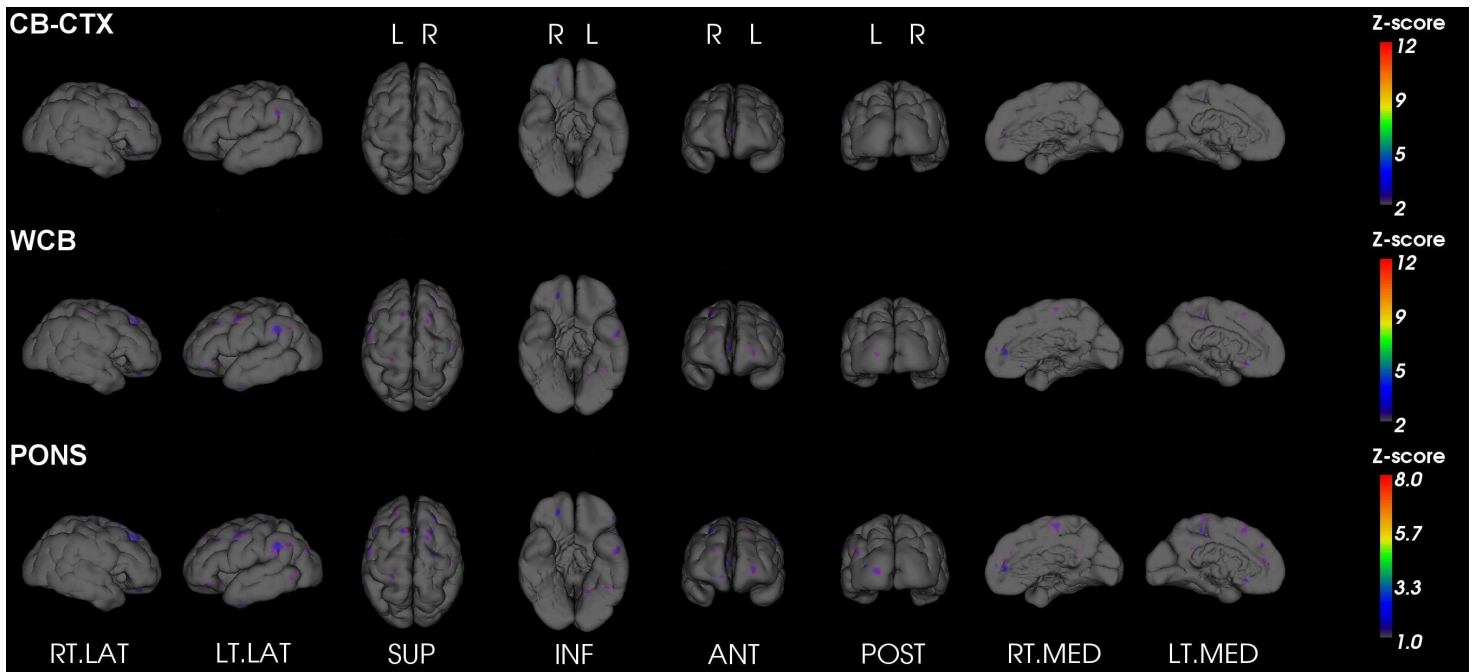
For evaluation purposes only. See <http://capaibl-milxcloud.csiro.au> for conditions of use. Software version 1.0

* Global SUVR is defined as the average of the frontal, superior parietal, lateral temporal and anterior and posterior cingulate regions of the brain

** Asymmetry is defined as the difference between the left and right uptake divided by their average



Z-Score maps



For evaluation purposes only. See <http://capaibl-milxcloud.csiro.au> for conditions of use. Software version 1.0

* Global SUVR is defined as the average of the frontal, superior parietal, lateral temporal and anterior and posterior cingulate regions of the brain

** Asymmetry is defined as the difference between the left and right uptake divided by their average