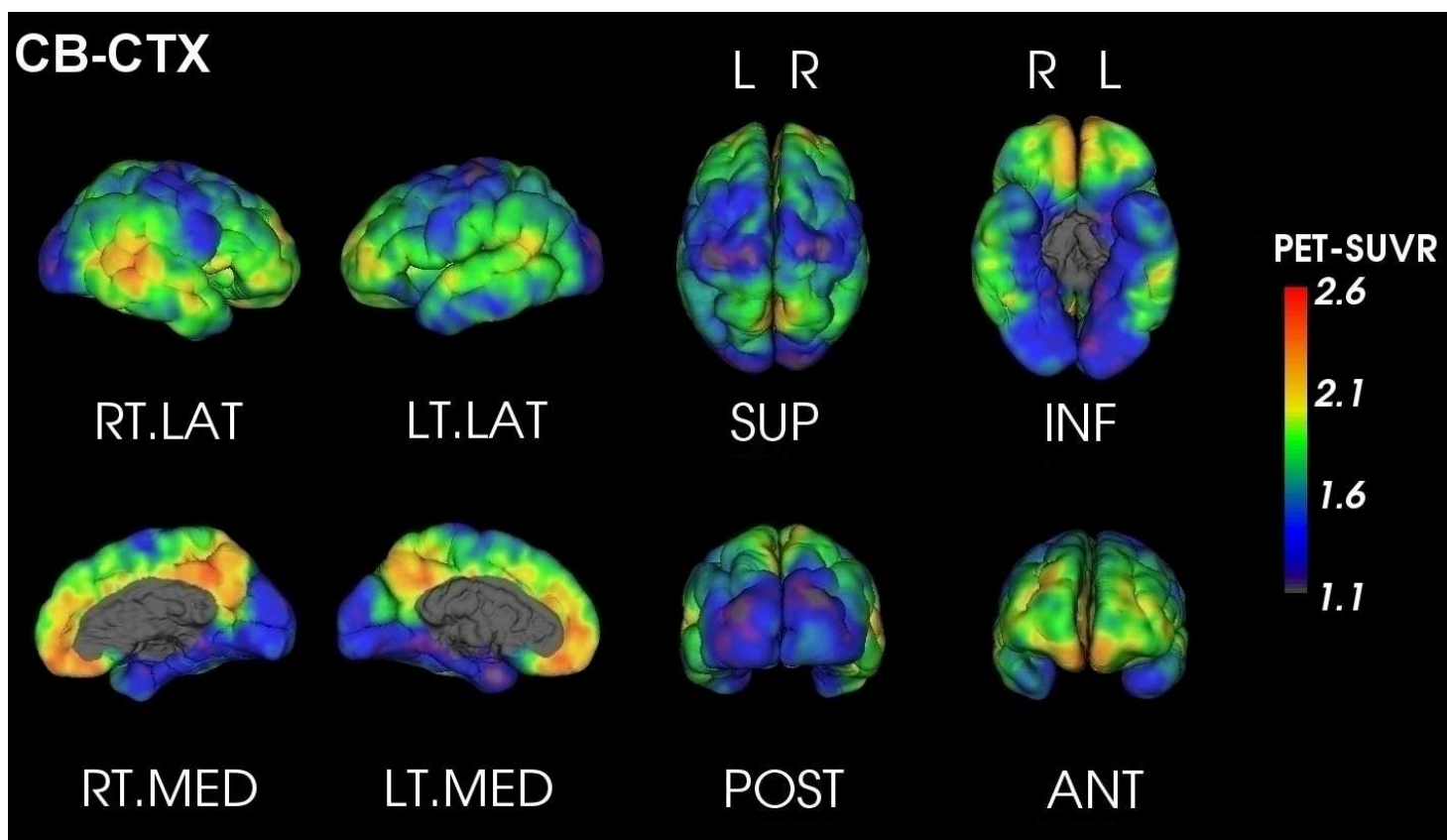




PET Quantification Report

SUBJECT: Anon_PiB_2
TRACER: 11C-PiB
DATE: Friday 11th July, 2014

AMYLOID LOAD: **HIGH**
GLOBAL SUVR_{Cb} * : 1.88



SUVR _{Cb}	Orbitofrontal	Frontal	Posterior Cingulate	Parietal	Temporal	Occipital
<i>Left</i>	1.98	2.06	2.20	1.66	1.89	1.20
<i>Right</i>	2.05	1.91	2.18	1.87	2.13	1.49
<i>Asymmetry</i> ** (%)	-3.33	7.29	0.86	-11.39	-12.27	-21.35



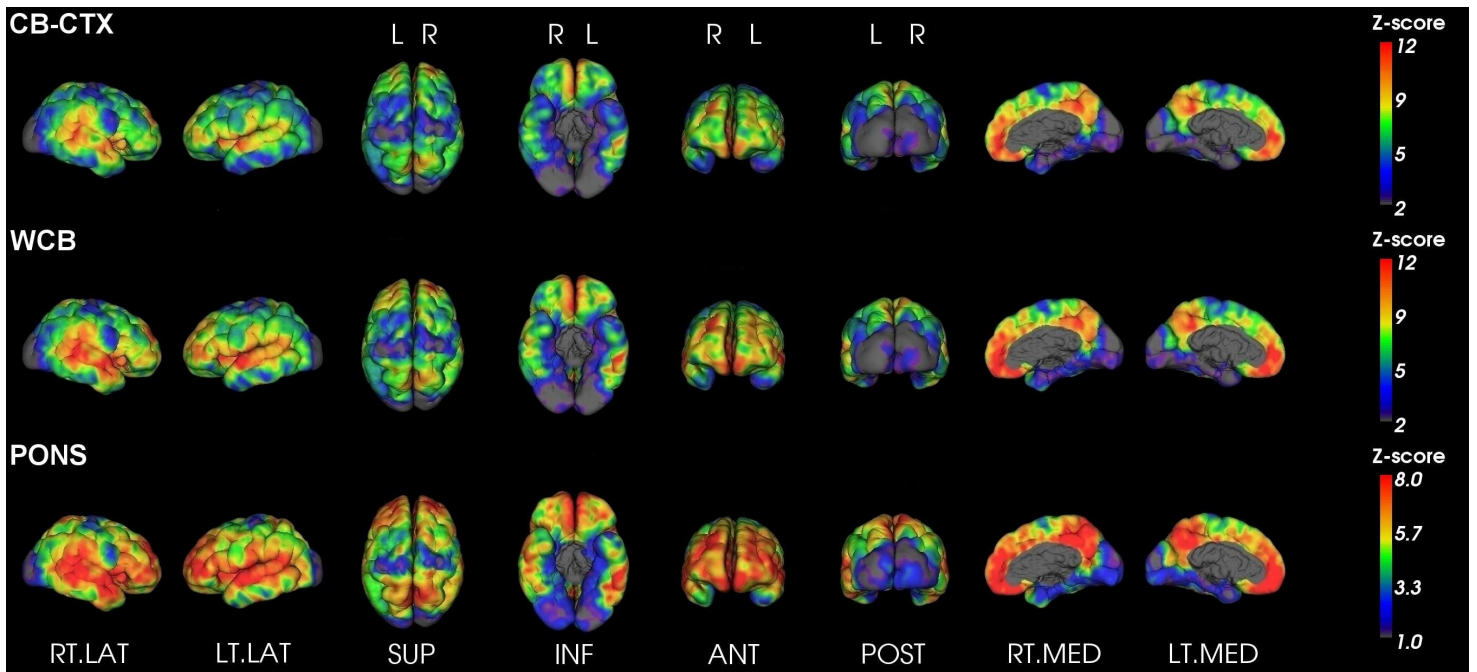
For evaluation purposes only. See <http://capaibl-milxcloud.csiro.au> for conditions of use. Software version 1.0

* Global SUVR is defined as the average of the frontal, superior parietal, lateral temporal and anterior and posterior cingulate regions of the brain

** Asymmetry is defined as the difference between the left and right uptake divided by their average



Z-Score maps



For evaluation purposes only. See <http://capaibl-milxcloud.csiro.au> for conditions of use. Software version 1.0

* Global SUVR is defined as the average of the frontal, superior parietal, lateral temporal and anterior and posterior cingulate regions of the brain

** Asymmetry is defined as the difference between the left and right uptake divided by their average