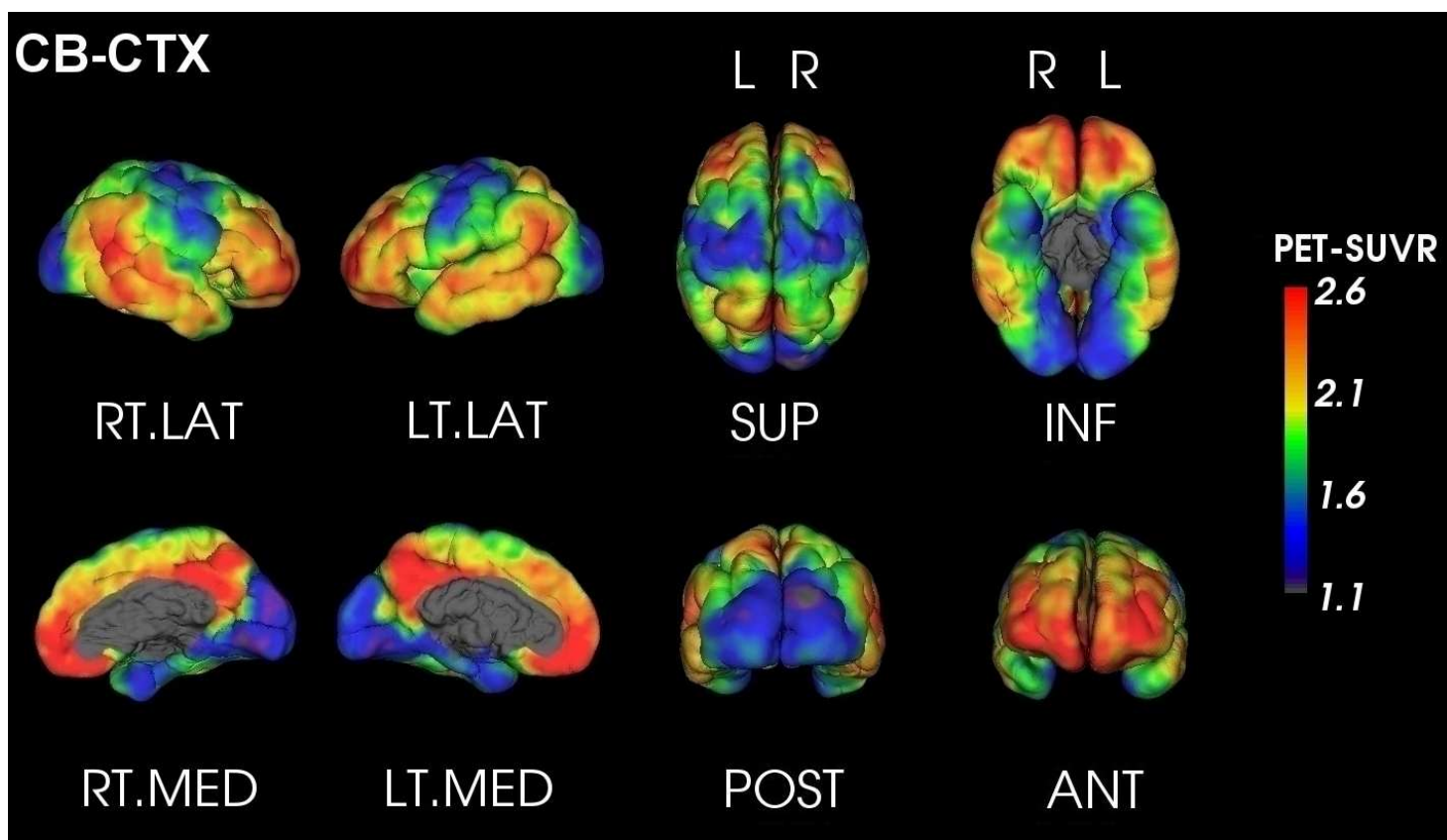




# PET Quantification Report

**SUBJECT:** Anon\_PiB\_3  
**TRACER:** 11C-PiB  
**DATE:** Friday 11<sup>th</sup> July, 2014

**AMYLOID LOAD:** **VERY HIGH**  
**GLOBAL SUVR<sub>Cb</sub>\* :** 2.30



SUVR <sub>Cb</sub>	Orbitofrontal	Frontal	Posterior Cingulate	Parietal	Temporal	Occipital
<i>Left</i>	2.47	2.77	2.64	2.12	2.37	1.31
<i>Right</i>	2.77	2.55	2.35	2.19	2.52	1.57
<i>Asymmetry</i> ** (%)	-11.17	8.20	11.85	-3.37	-6.32	-17.70



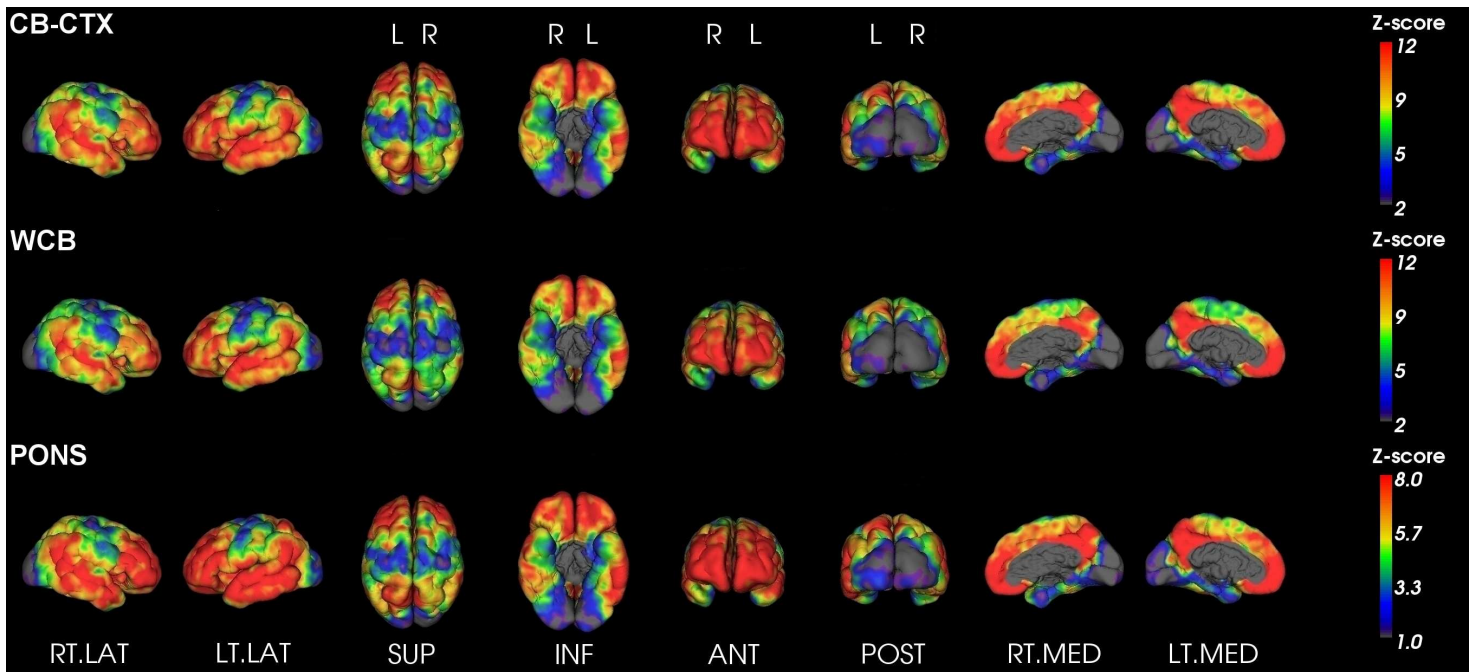
For evaluation purposes only. See <http://capaibl-milxcloud.csiro.au> for conditions of use. Software version 1.0

\* Global SUVR is defined as the average of the frontal, superior parietal, lateral temporal and anterior and posterior cingulate regions of the brain

\*\* Asymmetry is defined as the difference between the left and right uptake divided by their average



## Z-Score maps



For evaluation purposes only. See <http://capaibl-milxcloud.csiro.au> for conditions of use. Software version 1.0

\* Global SUVR is defined as the average of the frontal, superior parietal, lateral temporal and anterior and posterior cingulate regions of the brain

\*\* Asymmetry is defined as the difference between the left and right uptake divided by their average