

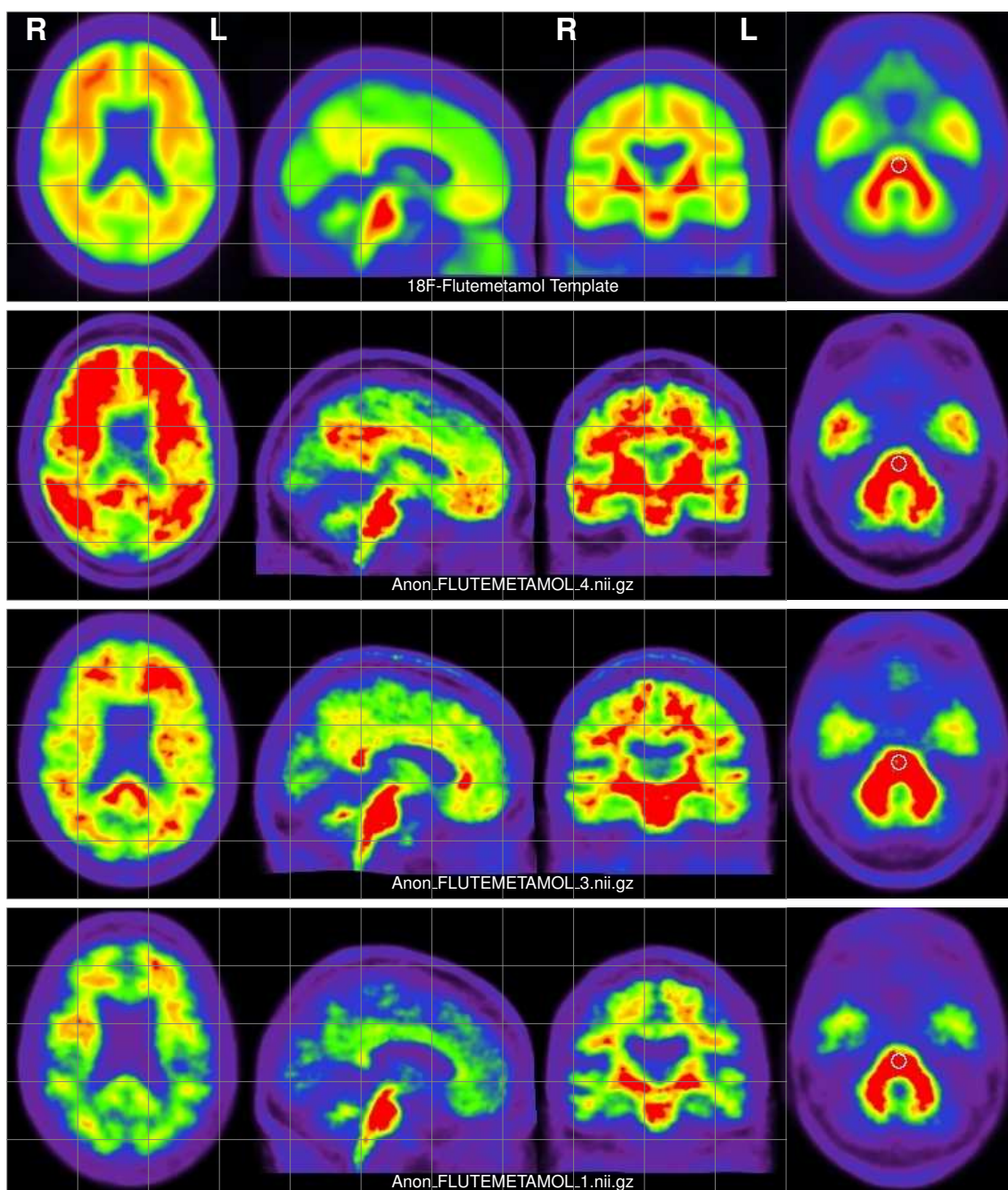


## PET Quality Control Report

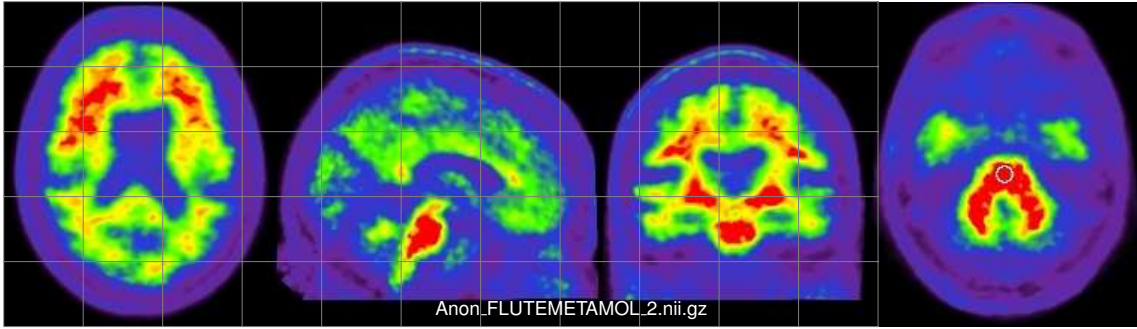
This report has been generated automatically by CapAIBL v1.0 for quality control purpose

### Subject's 18F-Flutemetamol images: Spatially normalised to the MNI PET template

Representative slices of the spatially normalised PET images to assess the quality of the registration and the placement of the reference region.



**NOT FOR CLINICAL USE**



**NOT FOR CLINICAL USE**

### Subject's 18F-Flutemetamol images in native space

Representative slices of the uploaded PET images to check that their orientation is correct with respect to the PET template

